



GLENCANNON

Vienna, Virginia

In the country-estate section of Fairfax County, Glencannon brings you the truly distinguished home. Stately Colonial homes are sited on estate size lots. Your Glencannon home affords such amenities as privacy zoned bedrooms, kitchens equipped with two ovens, central air conditioning, two-car garages with automatic radio-controlled doors. Glencannon is but 15 minutes from D.C., just moments from shopping centers including Tyson's Corner.

DIRECTIONS: From Tyson's Corner (Beltway Exit 11), South on Route 123 approximately 3 miles to Lawyer's Road. Turn right and approximately 1½ miles to Glencannon.

ALL OF THESE IMPORTANT QUALITY FEATURES ARE STANDARD IN EVERY GLENCANNON HOME:

LUXURY-EQUIPPED KITCHENS

- Hotpoint range with free standing eye level oven.
- Hotpoint 15.1 cu. ft. "Frost Free" refrigerator.
- Hotpoint sink waste disposer.
- Hotpoint dishwasher with 17-place capacity.
- Built-in telephone wall panel.
- Linoleum floor covering.
- Decorator-coordinated furniture-quality kitchen cabinets.
- Stainless steel sinks.
- Pantry closet.

LOVELY DECORATOR BATHROOMS

- Beautiful furniture-quality vanities.
- Safety-designed bathtubs with slip resistant surfaces.
- Solid marble thresholds.
- Glazed ceramic floor tile.
- Mortar embedded ceramic tile assures top quality installation and permanence.

IMPORTANT FEATURES IN EVERY HOME

- Year-round comfort with central air conditioning —electric, 41,000 to 48,000 BTU.

- Comfortable forced air gas heating with 160,000 to 185,000 BTU furnace.
- Two car garage with automatic radio-controlled doors.
- Family or recreation room with luxury paneling.
- Unusually attractive treatment of mirrors and medicine cabinets in dressing areas, baths and powder rooms.
- Slate foyers.
- Brick fireplace with brick hearth.
- Window shades are standard.
- Color coordination of entire home is available from our wide selection.
- Charming gas light on every front lawn.
- 50-gallon glass-lined gas water heater.
- All utilities and wiring underground.
- Low maintenance aluminum siding, gutters and downspouts.
- Covered front entrance.
- Decorative chandelier in all dining rooms.
- Silent light switches.
- Brass door knockers.
- Scored concrete patios.
- Oak hardwood floors.
- Circuit breaker electrical panel.
- 220 volt outlet for dryer.
- Landscaping provided.
- 200 amp electrical system.
- Window screens.

AIR CONDITIONING IS STANDARD IN EVERY HOME

THE YEONAS COMPANY

226 MAPLE AVENUE W., VIENNA, VIRGINIA 22180 • TEL. (703) 938-2200
GLENCANNON

W. H. STEVENS
Sales Manager
of this Organization
OH 281-4520 Res: 281-2811

Telephone - 281-4520

		<u>CASH PRICE</u>	<u>UNPD. BAL. (75%) of CASH PRICE 7 3/4% Annual Perctg. Rate</u>	<u>CASH DOWN PAYMENT</u>	<u>MONTHLY PAYMENTS P.I.T.I.</u>
BUCKHAVEN	A or C	\$53,000.	\$39,700.	\$13,300.	\$385.
BALLANTRAE	A or C	56,500.	42,300.	14,200.	410.
BALLANTRAE-E	(hip roof)	57,000.	42,700.	14,300.	415.
BALLANTRAE-H	(Alum.siding on front in lieu of brick)	56,000.	42,000.	14,000.	407.
BALLANTRAE-O	(Stone & Alum.siding on front in lieu of brick)	56,750.	42,500.	14,250.	411.
BALLANTRAE-S	(Gambrel roof with cedar shake shingles)	57,500.	43,100.	14,400.	418.
LOCHNESS	A	57,000.	42,700.	14,300.	415.
LOCHNESS	B (hip roof)	57,500.	43,100.	14,400.	418.
CARLISLE		56,500.	42,300.	14,200.	410.
HIGHLANDER #1	A or C (4 bedroom with sitting room)	61,000.	45,700.	15,300.	444.
HIGHLANDER #3	A or C (6 bedroom with 3 1/2 baths)	61,750.	46,300.	15,450.	450.
HIGHLANDER #5	A or C (5 bedroom with sitting room)	61,250.	45,900.	15,350.	446.
HIGHLANDER #1	D (with porch)	62,500.	46,800.	15,700.	454.
HIGHLANDER #3	D (with porch)	63,250.	47,400.	15,850.	459.
HIGHLANDER #5	D (with porch)	62,750.	47,000.	15,750.	456.

Additional costs to be added as an EXTRA where applicable.

Walk-out basements: BALLANTRAE - \$1,000. End entrance garage - \$300.

HIGHLANDER - \$1,000.

LOCHNESS - \$1,500. Premium lots - As listed.

1% Fee - Charge to purchasers on loans in excess of 75% of Cash Price.

The unpaid balance of the cash price is payable in 300 equal and consecutive monthly installments commencing within 45 days after settlement.

NOTE: THE ABOVE CASH PRICES AND TERMS ARE SUBJECT TO CHANGE.

9/2/69

Perm Bldg

THE YEONAS COMPANY

226 MAPLE AVENUE W., VIENNA, VIRGINIA 22180 • TEL. (703) 938-2200

THE GLENCANNON COMMUNITY Vienna, Virginia 22180

Lot 1	Continental	\$69,500
Lot 2	Lochness	\$71,600
Lot 3	Buckhaven	\$63,600
Lot 4	Continental	\$69,250
Lot 5	Lochness	\$68,700
Lot 63	Buckhaven	\$61,500
Lot 64	Lochness	\$68,000
Lot 71	Continental	\$65,600
Lot 73	Ballantrae	\$64,350
Lot 74	Lochness	\$69,900

LOAN INFORMATION: 80% first trusts available at First Federal of Arlington for 30 years at 7 3/4% interest with one point to purchaser.

ALL PRICES ARE SUBJECT TO CHANGE WITHOUT NOTIFICATION

Deliveries: 30 to 60 days from contract date.

(27 October 1971)

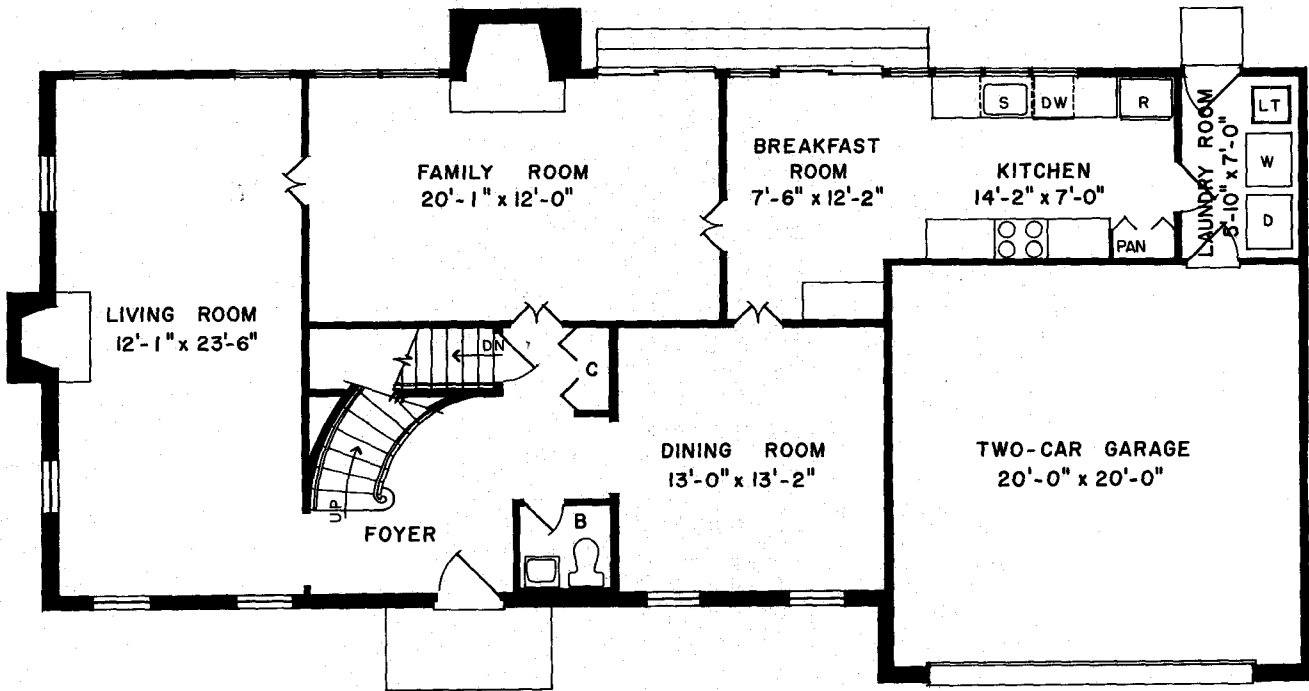
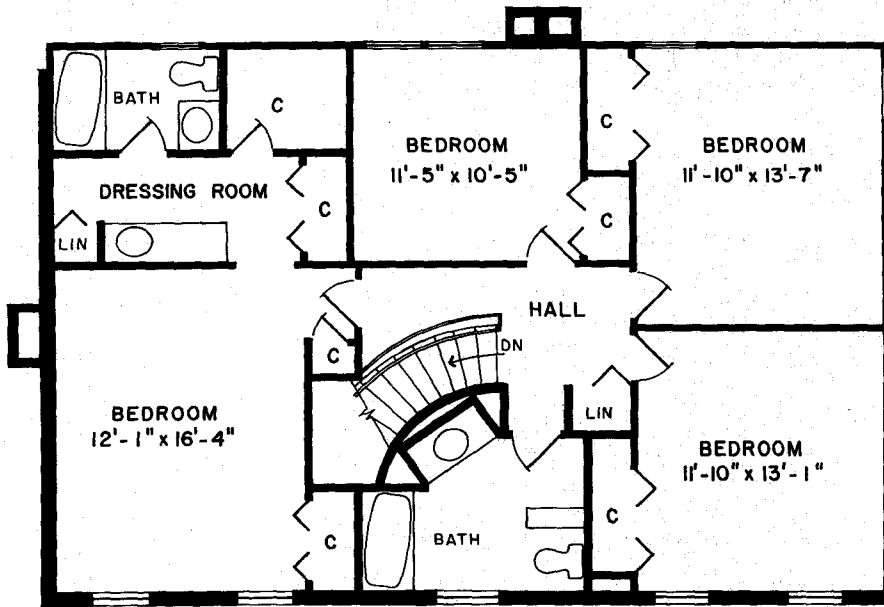


THE CARLISLE

This unique four bedroom colonial offers imaginative ideas not found in other homes. Picture a patio kitchen with sliding glass doors to a lovely garden area. Imagine the dramatic sweep of a circular staircase leading upstairs. There's a spacious family room and a breakfast room adjoining the kitchen, in addition to more formal dining and living rooms. If you want traditional Yeonas quality features in a new home that will be built in limited numbers, you will want the Carlisle.

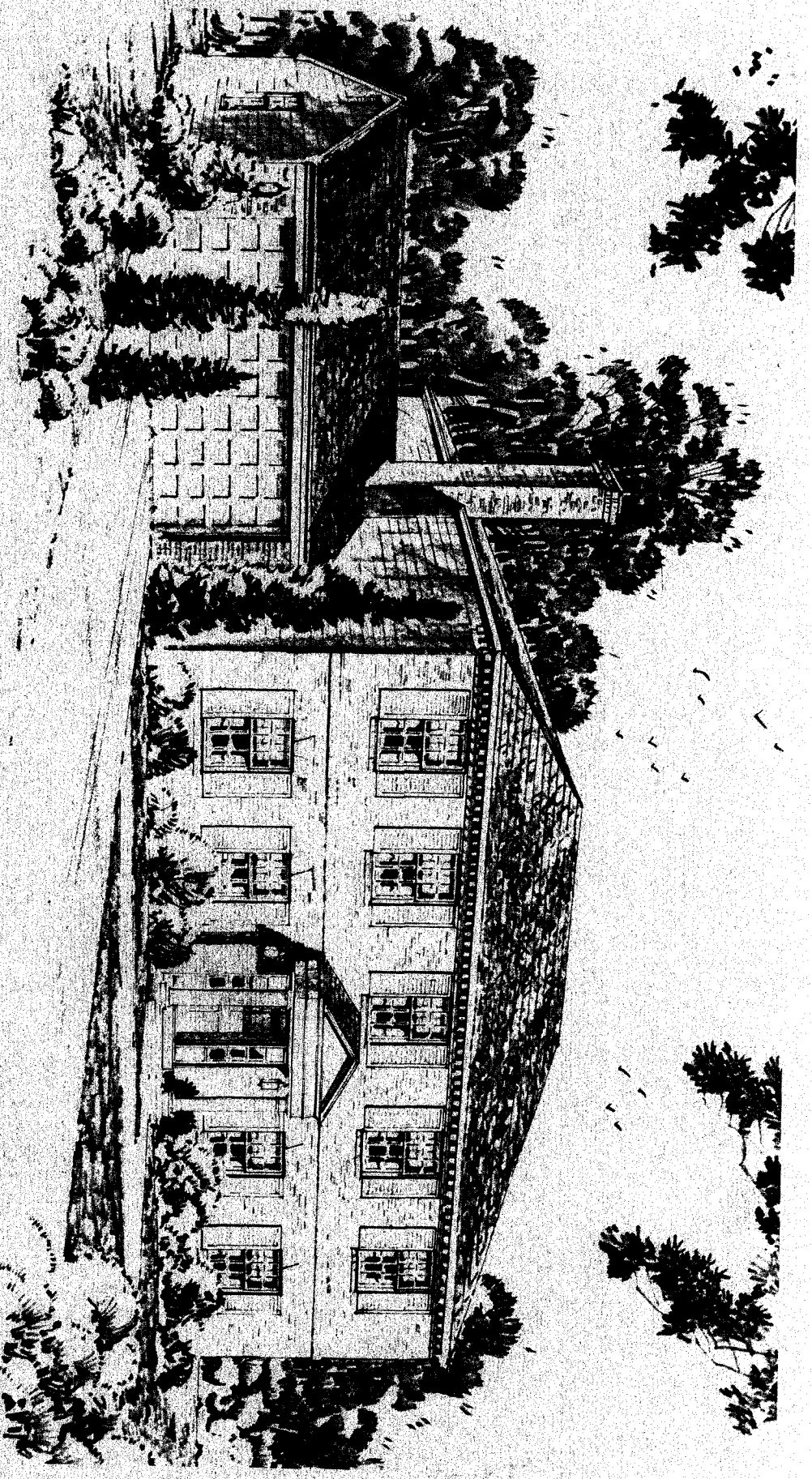
CENTRAL AIR CONDITIONING IS STANDARD IN EVERY YEONAS HOME

YEONAS
BUILDERS OF PROUD COMMUNITIES



THE CARLISLE

All dimensions shown are approximate



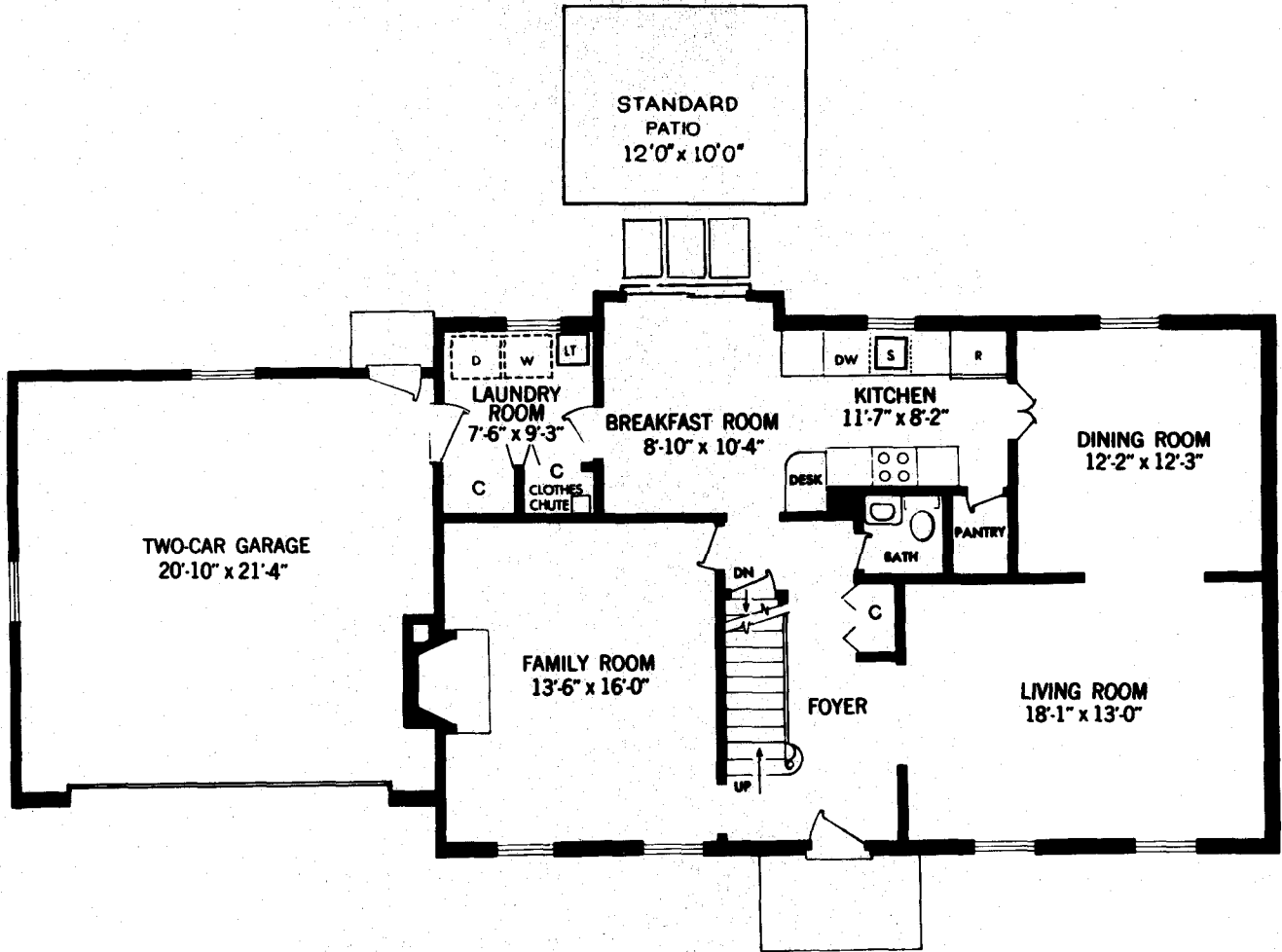
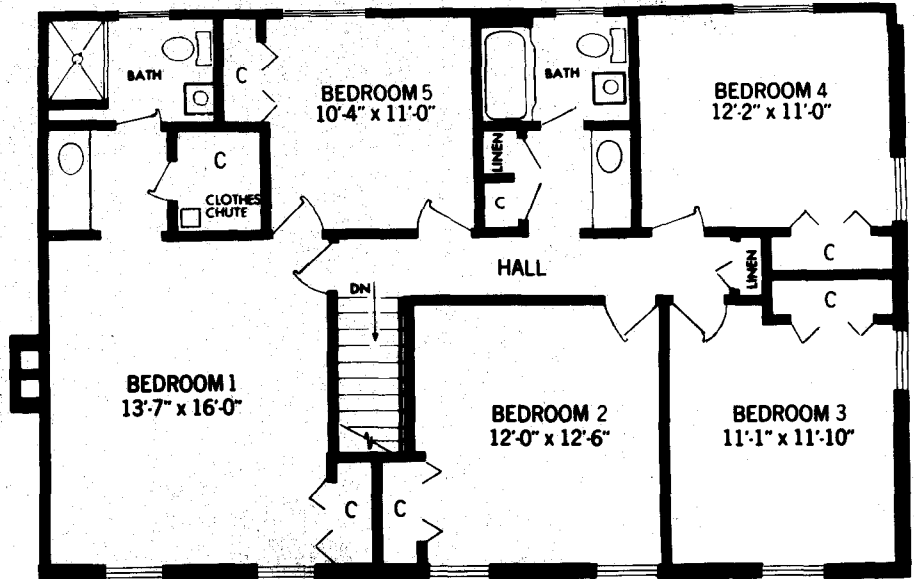
BALLANTRAE

THE BALLANTRAE

The gracious elegance of authentic colonial design is reflected in this magnificent five bedroom Yeonas home. From the moment you step inside, you'll be delighted by the generous space, the center hall design, the rich appointments. The large, comfortable family room is paneled in warm wood and features a beamed ceiling and cozy fireplace. The big kitchen, with planning desk and pantry, has plenty of extra space for informal meals. Yeonas thoughtfully placed a laundry and mud room on the first floor, next to the kitchen. On the second floor, there are five large bedrooms and two full baths, each with adjoining dressing area. Or, if you prefer, you may select the four bedroom version and enjoy the luxury of a master suite with private sitting room. Two car garage has automatic radio-controlled door.

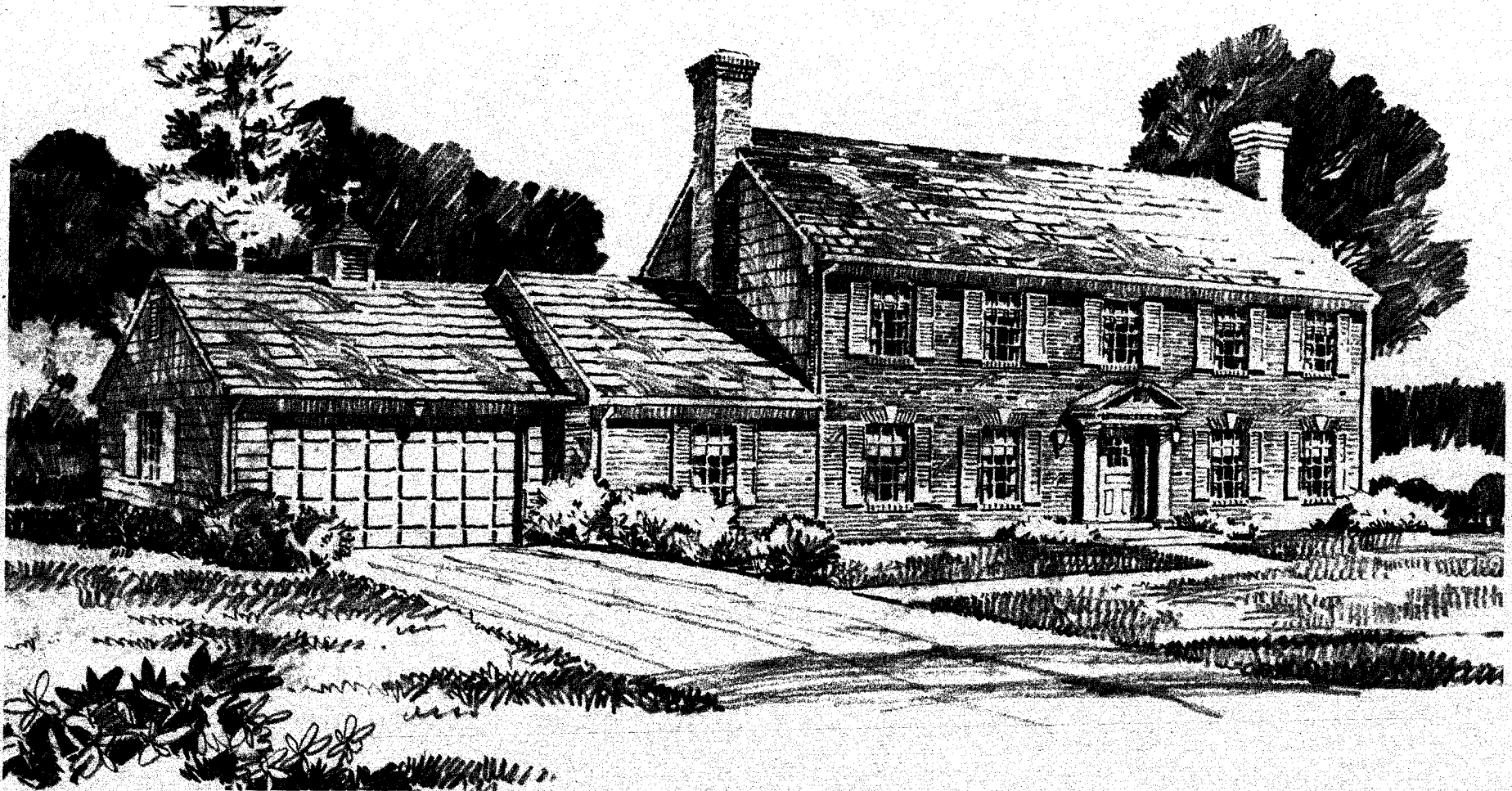
CENTRAL AIR CONDITIONING IS STANDARD IN EVERY YEONAS HOME

YEONAS
BUILDERS OF PROUD COMMUNITIES



THE BALLANTRAE

All dimensions shown are approximate



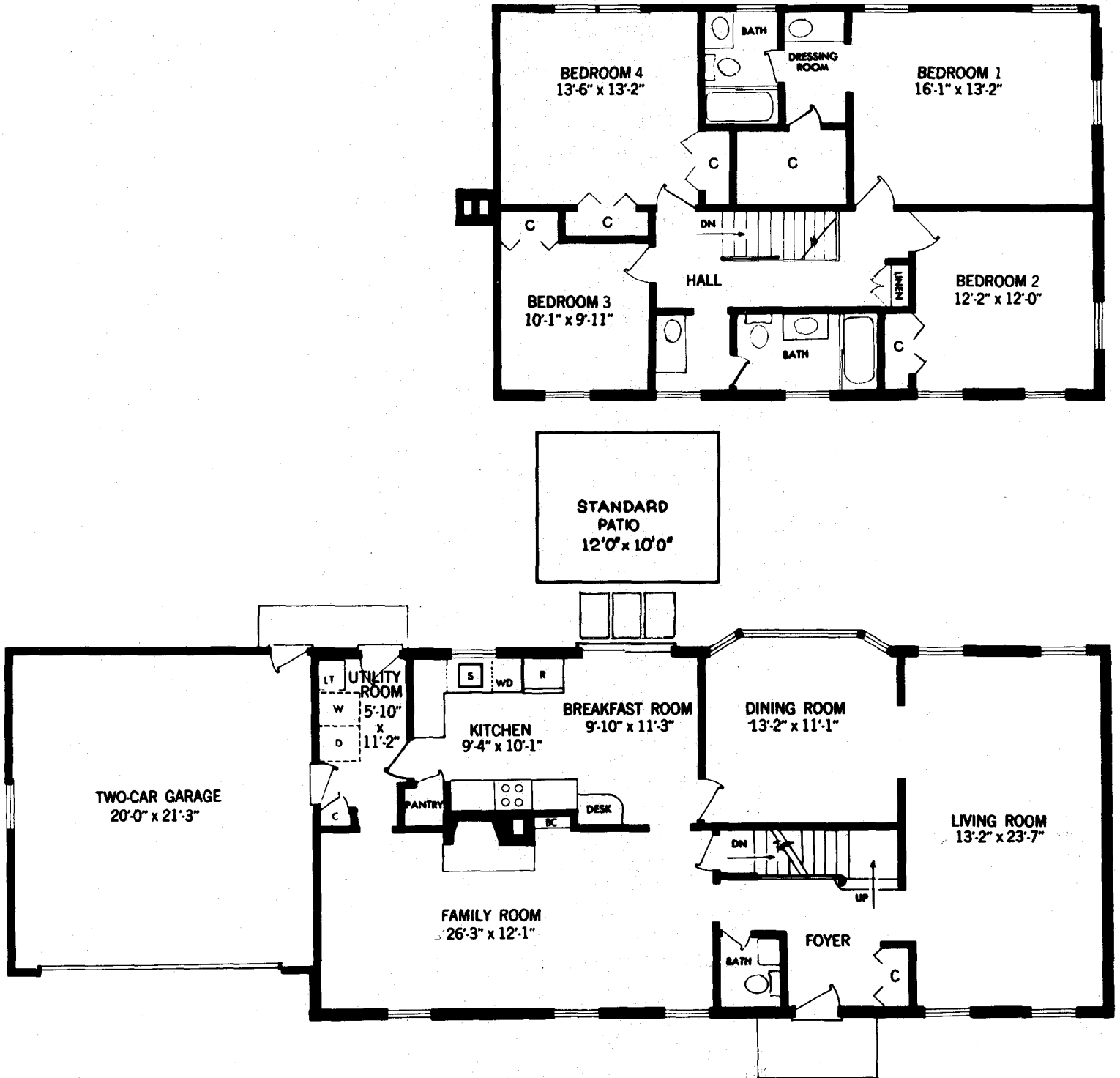
LOCHNESS A

THE LOCHNESS

The superlative Lochness invites comparison with the most sumptuous colonial mansions. You'll be awed by the great 26-ft. paneled family room with its beamed ceiling and fireplace. The generous 23-ft. living room is perfect for formal entertaining. And Yeonas doesn't forget the important features so necessary for everyday comfort and convenience. For example, the big kitchen with planning desk and pantry has a large breakfast and informal dining area. A laundry and mud room is adjacent to the kitchen. On the second floor, there are four spacious bedrooms, including a master suite with private dressing area and enormous walk-in closet. Two-car garage has automatic radio-controlled door.

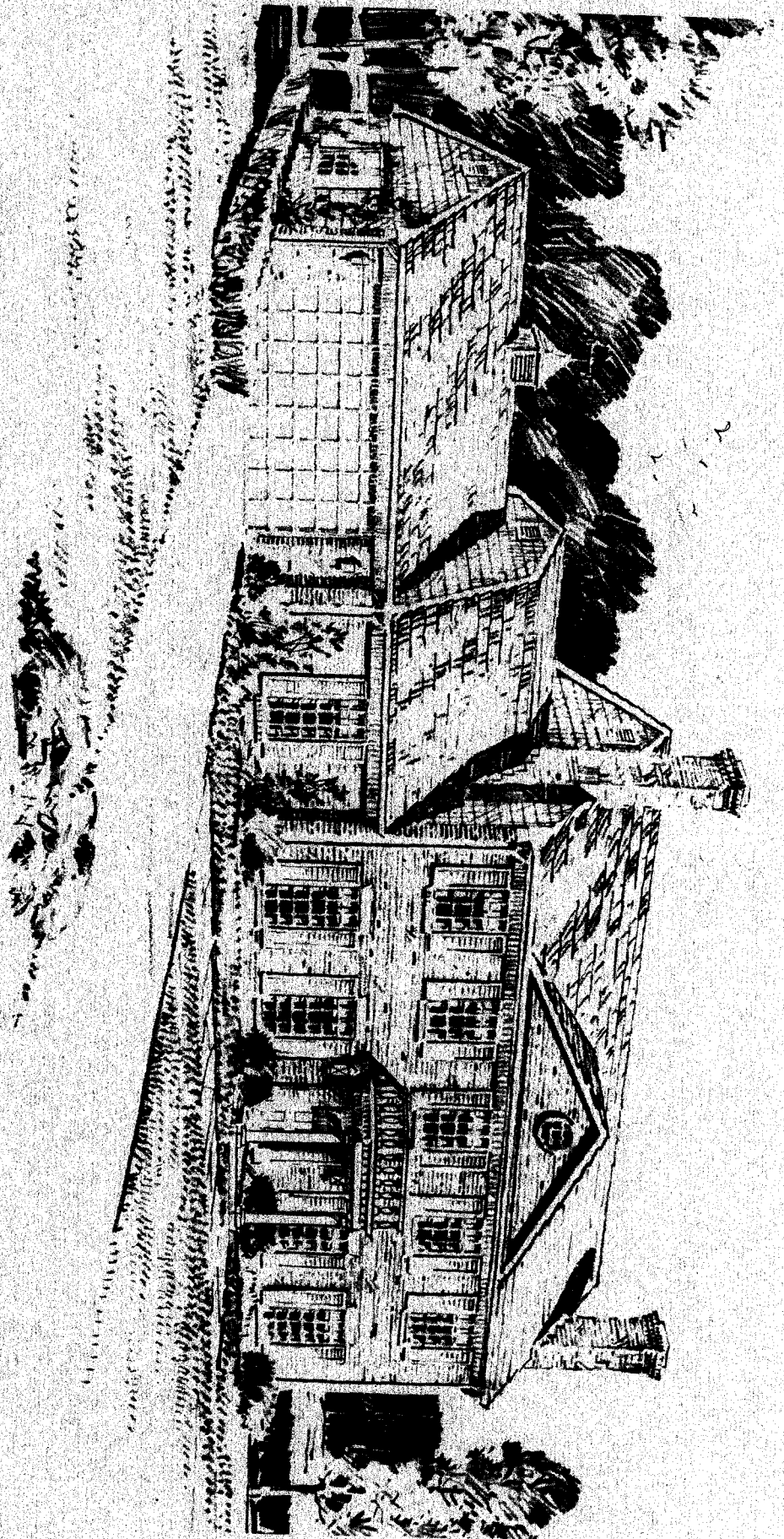
CENTRAL AIR CONDITIONING IS STANDARD IN EVERY YEONAS HOME

YEONAS
BUILDERS OF PROUD COMMUNITIES



THE LOCHNESS

All dimensions shown are approximate



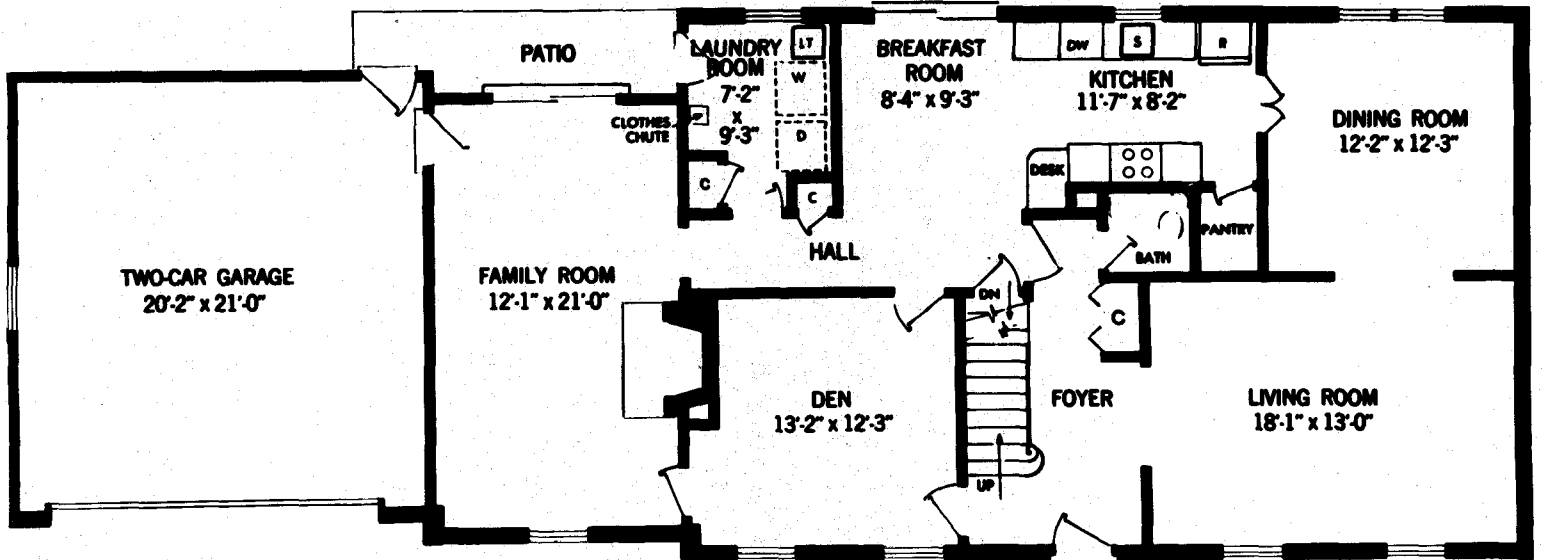
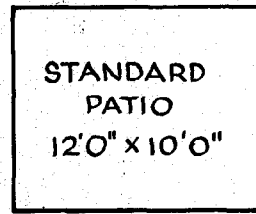
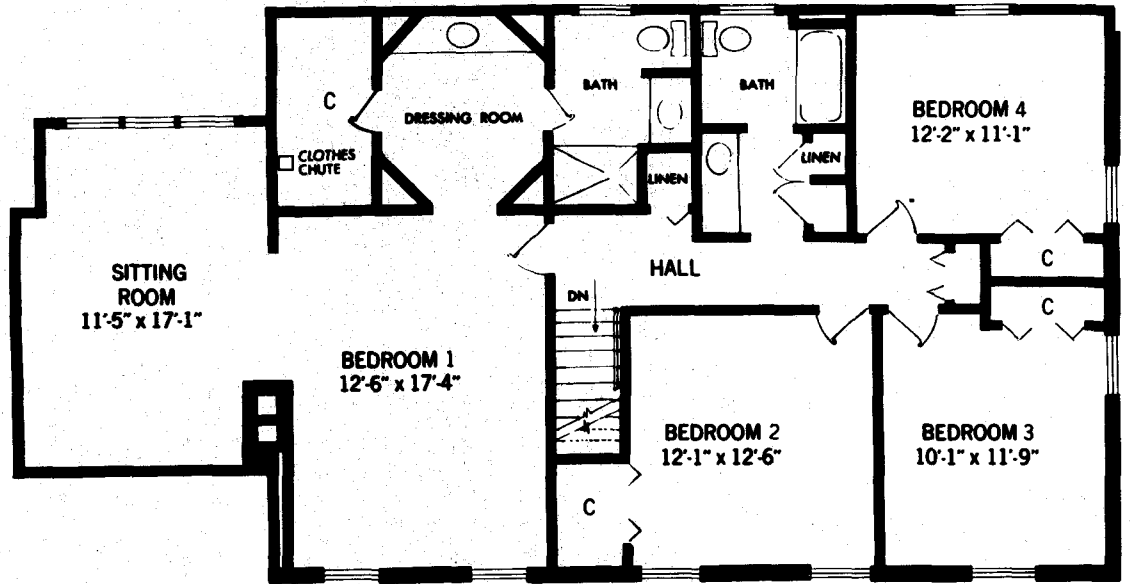
THE HIGHLANDER

From the moment you enter this stately colonial home, there can be no doubt you have discovered the ultimate in luxury and comfort. Note that in addition to the large paneled family room—ideal for informal relaxation and entertaining—there's a den or study for those moments when you desire privacy and quiet. The second floor is available with four or five bedrooms and three baths. In the four bedroom model, you'll be particularly impressed by the unusually spacious master suite with its lovely octagonal dressing room, walk-in closet, and delightful, secluded sitting room. Two car garage has automatic radio-controlled door.

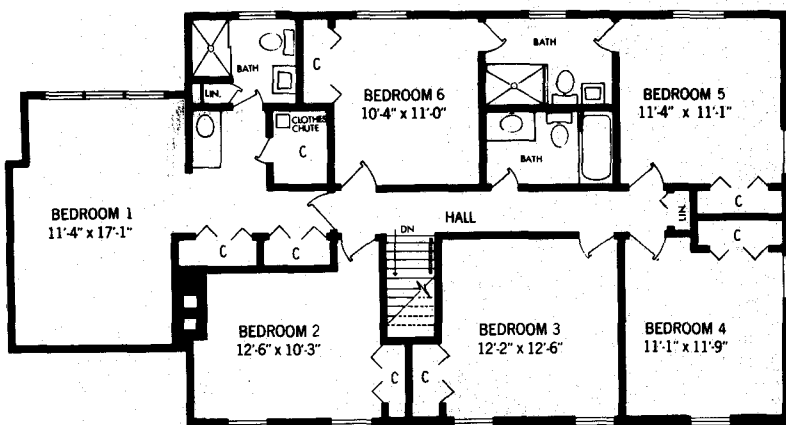
CENTRAL AIR CONDITIONING IS STANDARD IN EVERY YEONAS HOME

HIGHLANDER A

YEONAS
BUILDERS OF PROUD COMMUNITIES



Alternate Second Floor



THE HIGHLANDER

All dimensions shown are approximate



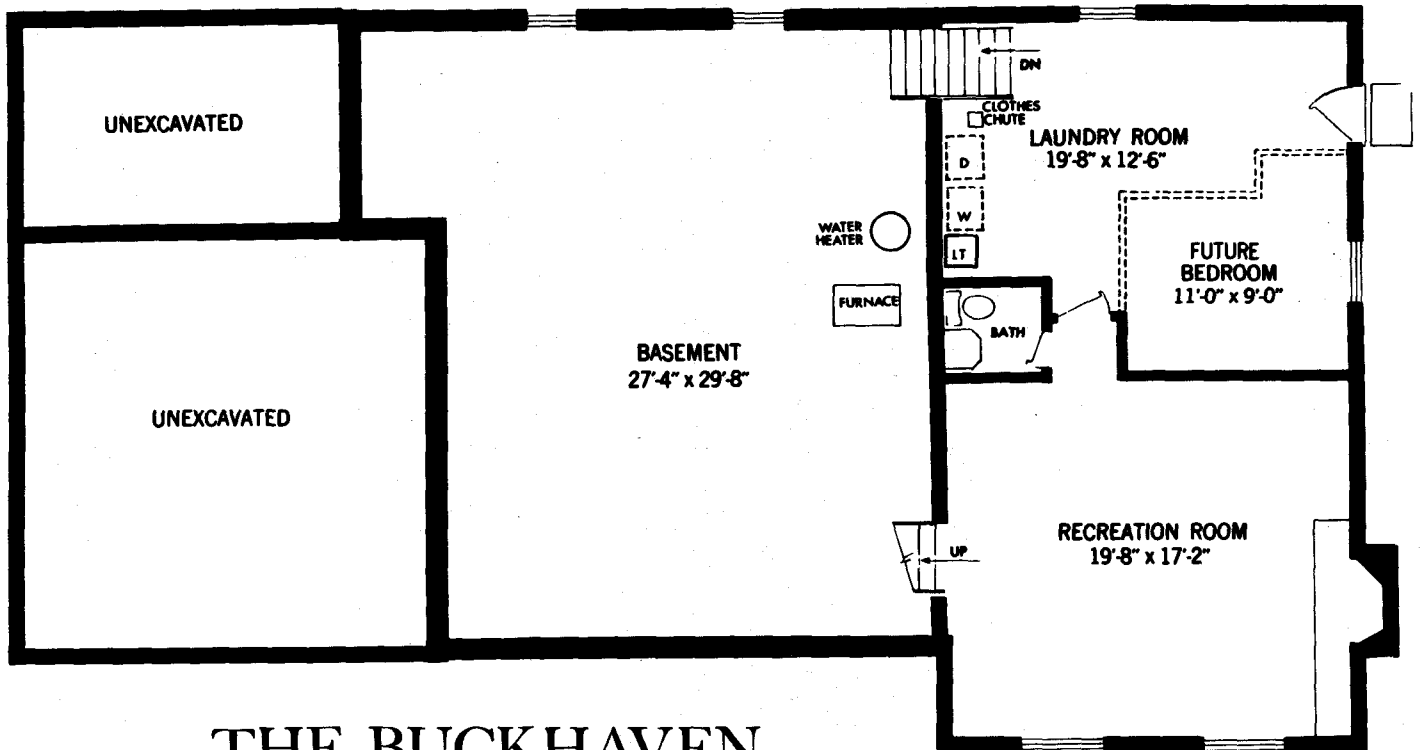
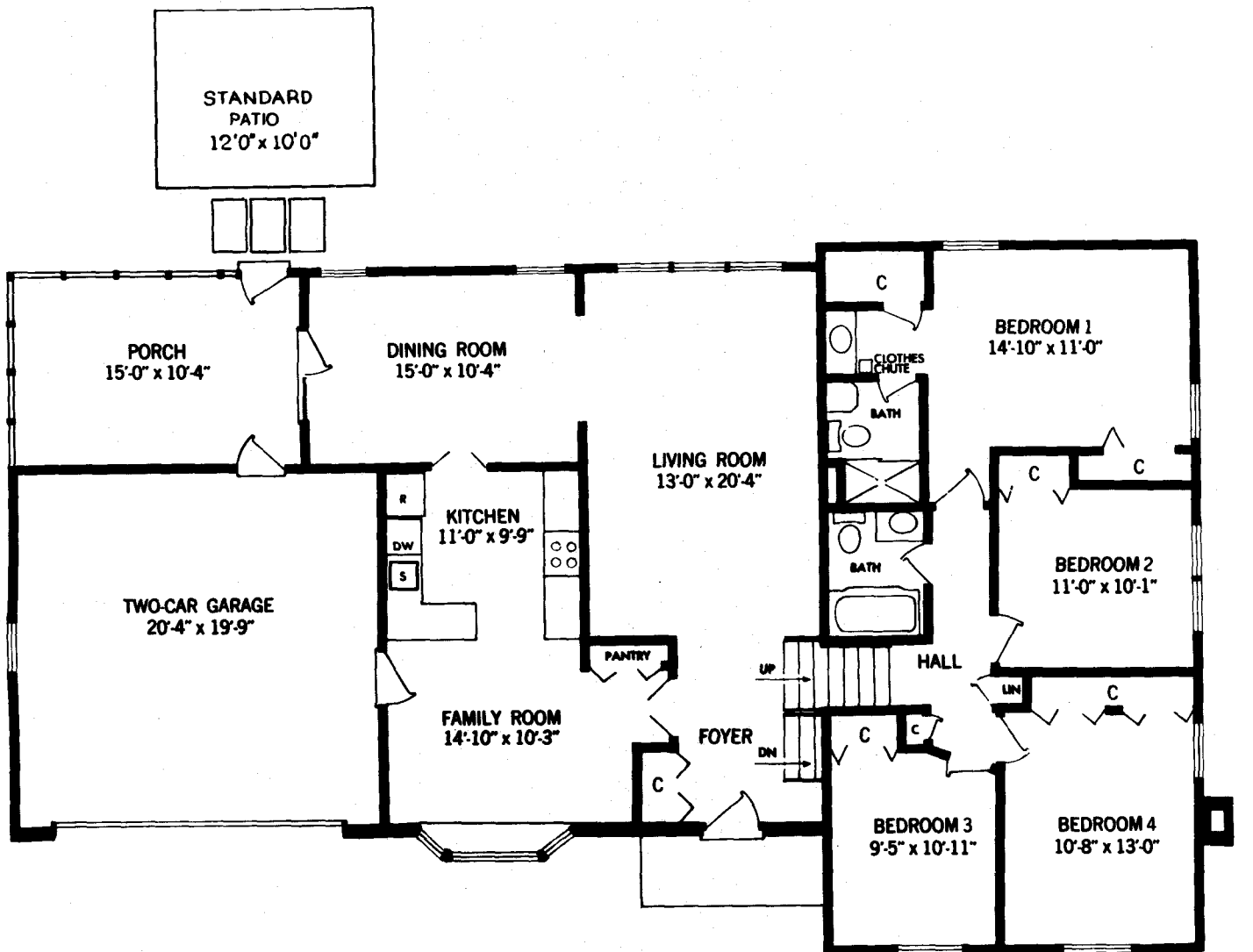
BUCKHAVEN A

THE BUCKHAVEN

Efficient use of space is just one of the many virtues of this handsome, well-planned home. Three separate elevations create a pattern of family living that provides for both privacy and togetherness. The wealth of possibilities for entertaining or leisure hours includes a room-sized screened porch. A family room adjoining the kitchen. A recreation room with raised hearth fireplace. A formal living and dining room. From a practical standpoint, you'll like the laundry room storage area and full basement with room for expansion. "Extras" such as air conditioning and a two car garage with automatic radio-controlled doors are included at no extra cost—which makes The Buckhaven another fine example of why a Yeonas home is the most complete home you can buy.

CENTRAL AIR CONDITIONING IS STANDARD IN EVERY YEONAS HOME

YEONAS
BUILDERS OF PROUD COMMUNITIES



THE BUCKHAVEN

All dimensions shown are approximate



THE CONTINENTAL

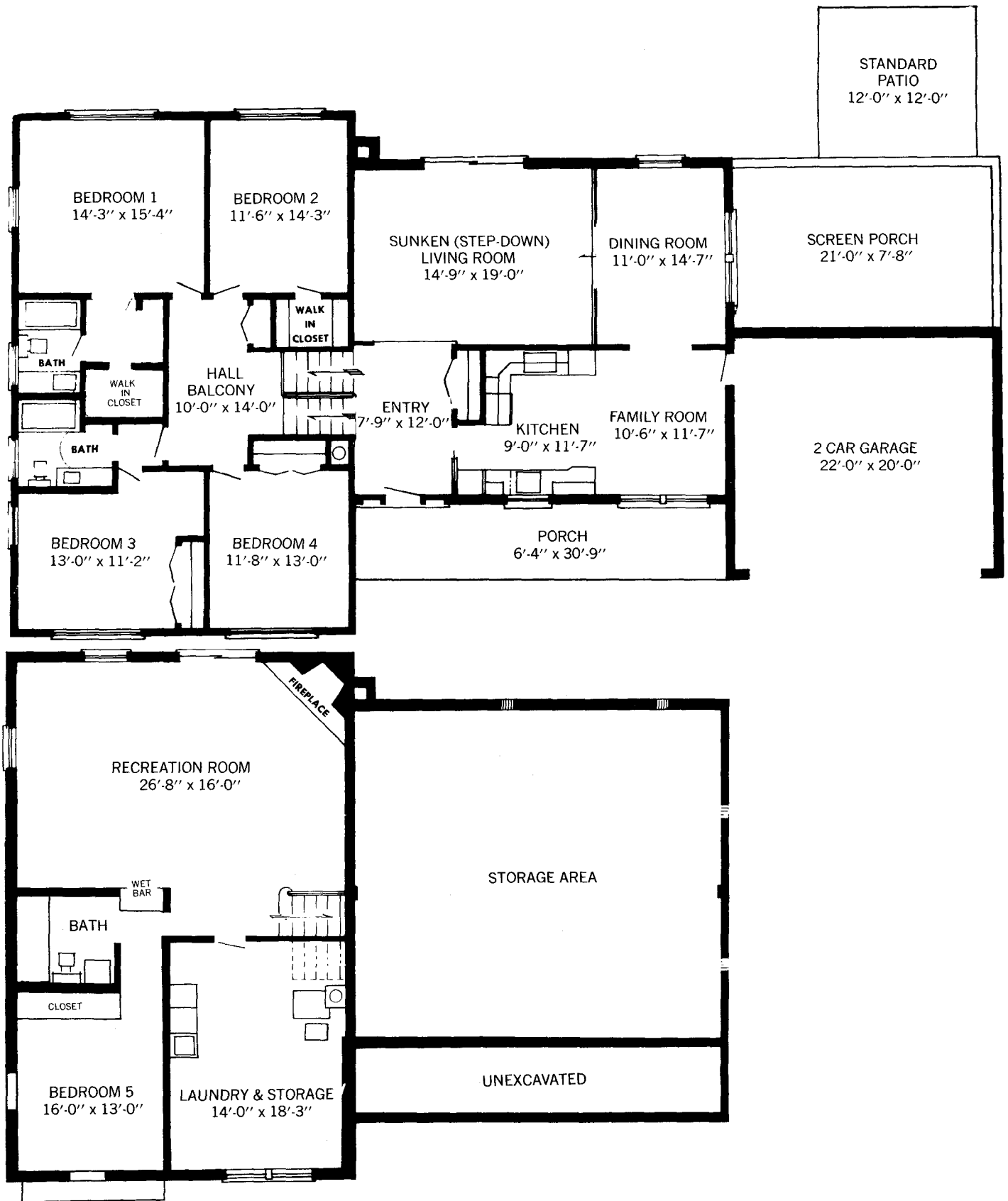
THE CONTINENTAL

Designed on a grand scale. The Continental is a singular example of good taste, spaciousness and a well-conceived plan for gracious living. Its split level design accommodates five bedrooms and three baths. A sunken living room is typical of the distinctive flair and air of elegance you'll find everywhere in this lovely home. The panelled recreation room centers around an important corner fireplace with raised brick hearth. The unusually large kitchen has an adjoining family room which is also handsomely panelled. The family room off the kitchen, the screened porch—these are built-in assets for activities. This home leaves absolutely nothing to be desired.

CENTRAL AIR CONDITIONING IS STANDARD



PLANNED AND BUILT BY
TOWN & COUNTRY DEVELOPERS
*the builder who gives an
extra dimension in quality*



THE CONTINENTAL

All dimensions shown are approximate



LOCHNESS A

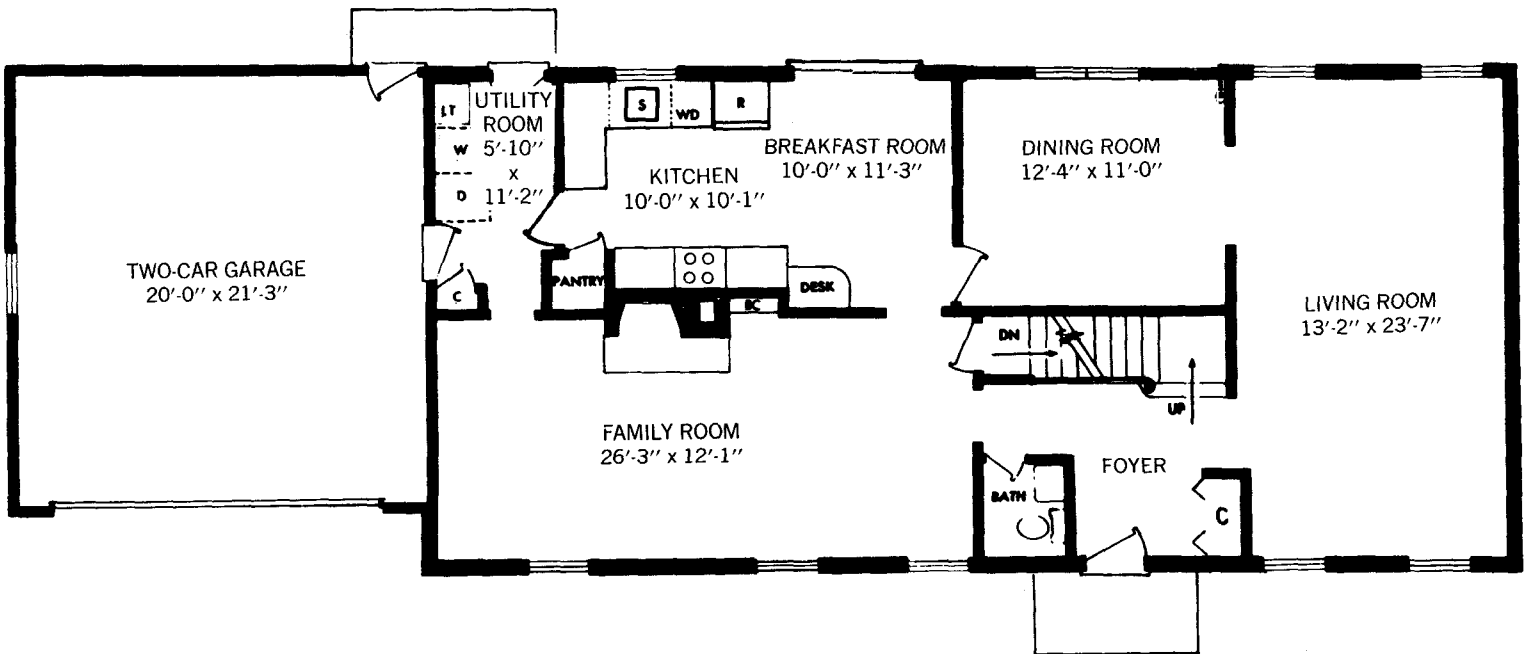
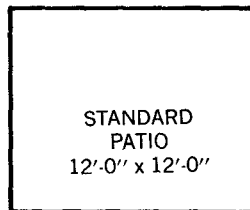
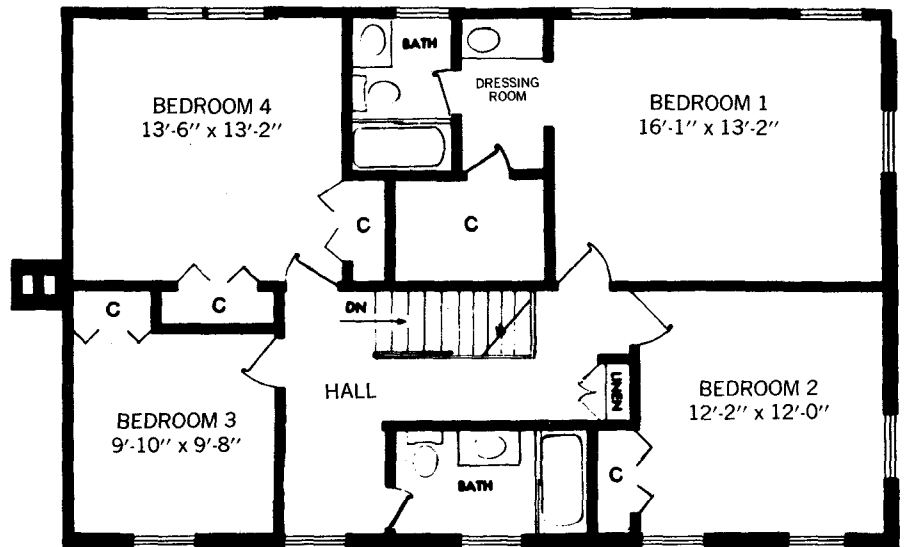
THE LOCHNESS

The superlative Lochness invites comparison with the most sumptuous colonial mansions. You'll be awed by the great 26-ft. paneled family room with its beamed ceiling and fireplace. The generous 23-ft. living room is perfect for formal entertaining. And we didn't forget the important features so necessary for everyday comfort and convenience. For example, the big kitchen with planning desk and pantry has a large breakfast and informal dining area. A laundry and mud room is adjacent to the kitchen. On the second floor, there are four spacious bedrooms, including a master suite with private dressing area and enormous walk-in closet. Two-car garage has automatic radio-controlled door.

CENTRAL AIR CONDITIONING IS STANDARD



PLANNED AND BUILT BY
TOWN & COUNTRY DEVELOPERS
*the builder who gives an
extra dimension in quality*



THE LOCHNESS

All dimensions shown are approximate